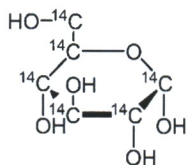


## Certificate of Analysis

**MC-144W**

**D-Glucose, [ $^{14}\text{C}(\text{U})$ ]-**



M.W.  $^{12}\text{C}$  180.16;  $^{14}\text{C}$  188.81 @ 270 mCi/mmol

**Lot #:** 842-162-270-A-20180731-SBA

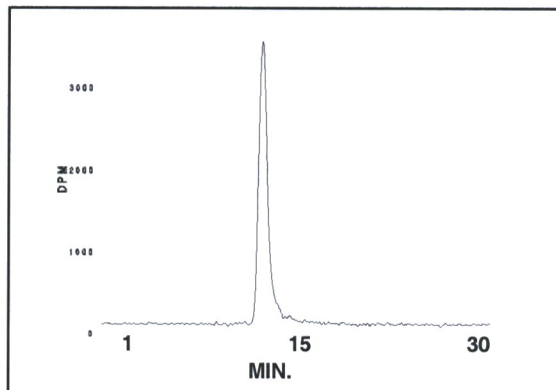
**\*Molar Activity by MS:** 270 mCi/mmol

**Concentration:** 0.1 mCi/ml; 69.93  $\mu\text{g/ml}$

**Packaged in:** Aqueous solution

**Date of Analysis:** February 1, 2022

**\*Radiochemical Purity by HPLC:** 99%



**HPLC ANALYSIS LOT 842-162-270-A-20180731-SBA**

File Name: int49773 Date and Time: 2/1/2022 9:56:53 AM

Unit 4 Radio

Peak #	Area %	Time	Area
1	99.04	12.42000	16543.62922
2	0.30	13.54930	50.05499
3	0.13	14.19600	21.21389
4	0.54	14.57070	89.39831
Totals	100.00		16704.29641

**Stability and Storage Recommendation:** The rate of decomposition is approximately 0.1%/month for the first six months after purification when stored at 0-5°C.

**\*Quality Level Disclaimer:** Results were obtained utilizing non-qualified instrumentation, methods that have not been validated or transferred, and analyses not performed according to a formal, documented, analytical protocol.

When handling this radiochemical, please refer to the safe handling of isotopes document provided with your shipment. If the document is misplaced, a link to a copy is available at [www.moravek.com/customer-service](http://www.moravek.com/customer-service).

In addition to the hazard connected with radiation, this compound also has chemical safety characteristics that need to be taken into account before it can be safely worked with. For assistance with designing a safe working environment and procedures for this and all chemicals at your workplace, please contact OSHA at 800-321-6742(OSHA) or [https://www.osha.gov/html/Feed\\_Back.html](https://www.osha.gov/html/Feed_Back.html).

**Caution:** This material was manufactured under non-GLP conditions and is intended for investigational or manufacturing use only. Formulations using this material are not suitable for use in humans or clinical diagnosis. Responsibility for use of this material and compliance with federal law rests solely with the purchaser. An expiry date has not been determined. In the absence of stability data, a purity check is recommended before use.