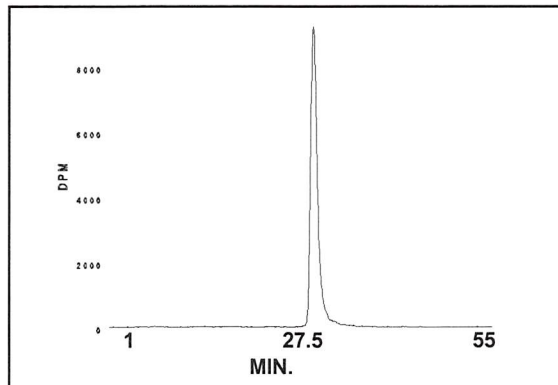
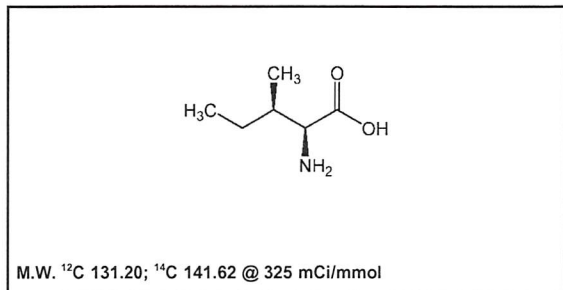


Certificate of Analysis

MC-174

L-Isoleucine, [¹⁴C(U)]-



Lot #: 391-056-325-A-20120410-SBA

Specific Activity: 325 mCi/mmol

Concentration: 0.1 mCi/ml; 43.57 µg/ml

Packaged in: Ethanol : water (2 : 98) solution

Date of Analysis: November 8, 2018

Radiochemical Purity: 98.9%

HPLC ANALYSIS LOT 391-056-325-A-20120410-SBA

File Name: int63836 Date and Time: 11/8/2018 3:26:35 PM
Unit 6 Radio

Peak #	Area %	Time	Area
1	0.11	6.59330	69.56238
2	0.19	13.82670	128.12001
3	0.04	16.37670	26.64262
4	0.12	17.24670	80.71852
5	0.05	24.36000	35.30025
6	0.12	28.20330	79.74304
7	98.86	29.38330	65228.80787
8	0.06	31.28000	38.23830
9	0.02	31.71670	11.95621
10	0.13	32.30000	86.88343
11	0.11	33.63670	73.44180
12	0.06	34.73330	37.77128
13	0.09	35.11670	57.11305
14	0.04	35.79330	25.23661
Totals	100.00		65979.53537

Stability and Storage Recommendation: The rate of decomposition is approximately 0.5%/month for the first six months after purification when stored at 0-5°C.

Caution: Not For Use In Humans Or Clinical Diagnosis. This product is intended for investigational or manufacturing use only. It is pharmaceutically unrefined and is not intended for use in humans. Responsibility for its use in humans, as a diagnostic reagent, and compliance with federal laws rests solely with the purchaser.