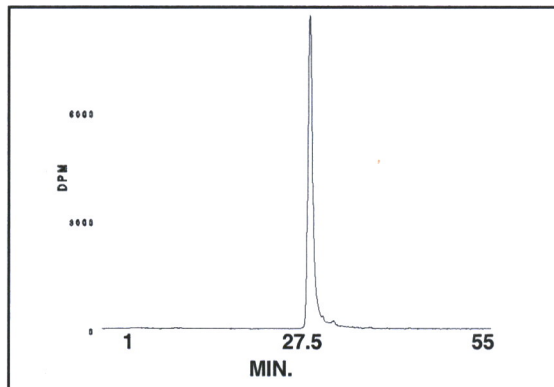
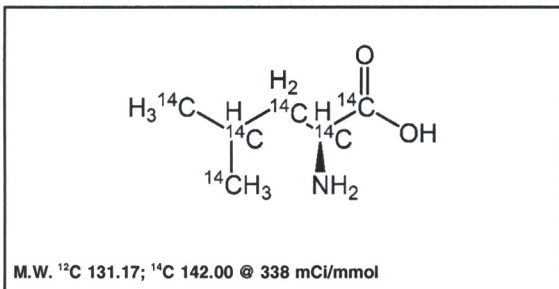


## Certificate of Analysis

**MC-175**

**L-Leucine, [<sup>14</sup>C(U)]-**



HPLC ANALYSIS LOT 942-046-338-A-20200323-SBA  
File Name: int64492 Date and Time: 5/6/2021 8:56:11 AM  
Unit 6 Radio

Peak #	Area %	Time	Area
1	98.16	29.40500	44851.86150
2	0.18	31.23170	82.09491
3	0.10	31.82000	46.58628
4	0.68	32.77330	312.44493
5	0.02	33.55170	11.32660
6	0.06	33.93830	29.53489
7	0.19	34.77000	87.63885
8	0.24	36.04000	109.10475
9	0.36	38.13500	163.07783
Totals	100.00		45693.67054

**Lot #:** 942-046-338-A-20200323-SBA

**\*Molar Activity by MS:** 338 mCi/mmol

**Concentration:** 0.1 mCi/ml; 42.01 µg/ml

**Packaged in:** Ethanol : water (2 : 98) solution

**Date of Analysis:** May 6, 2021

**\*Radiochemical Purity by HPLC:** 98%

**Stability and Storage Recommendation:** The rate of decomposition is approximately 0.1%/month for the first six months after purification when stored at 0-5°C.

**\*Quality Level Disclaimer:** Results were obtained utilizing non-qualified instrumentation, methods that have not been validated or transferred, and analyses not performed according to a formal, documented, analytical protocol.

When handling this radiochemical, please refer to the safe handling of isotopes document provided with your shipment. If the document is misplaced, a link to a copy is available at [www.moravek.com/customer-service](http://www.moravek.com/customer-service).

In addition to the hazard connected with radiation, this compound also has chemical safety characteristics that need to be taken into account before it can be safely worked with. For assistance with designing a safe working environment and procedures for this and all chemicals at your workplace, please contact OSHA at 800-321-6742(OSHA) or [https://www.osha.gov/html/Feed\\_Back.html](https://www.osha.gov/html/Feed_Back.html).

**Caution:** This material was manufactured under research grade conditions and is intended for investigational or manufacturing use only. It is pharmaceutically unrefined and is not suitable for use in humans or clinical diagnosis. Responsibility for its use and compliance with federal law rests solely with the purchaser. If the compound and/or any associated information/documentation derived from its use could be used for any potential future filings, research grade material is not recommended. Expiry date not determined. In the absence of stability data, a purity check is recommended before use.