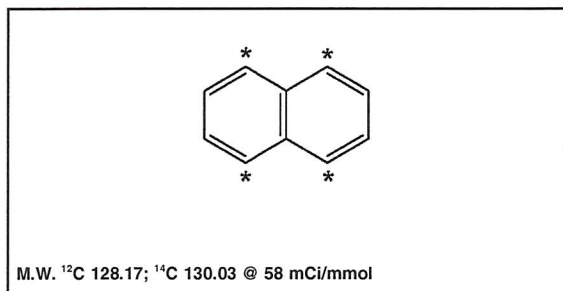


Certificate of Analysis

MC-2147

Naphthalene, [1,4,5,8-¹⁴C]-



Lot #: 730-008-058-A-20070525-TN

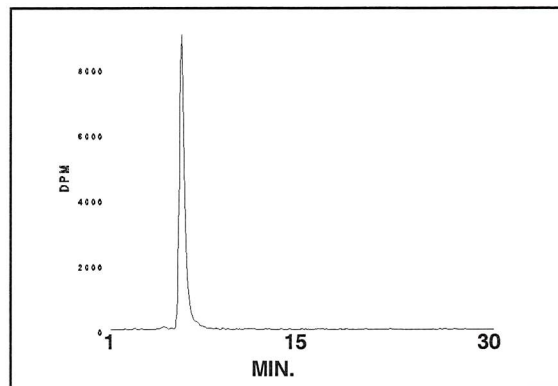
Specific Activity: 58 mCi/mmol

Concentration: 0.1 mCi/ml; 224.19 µg/ml

Packaged in: Methanol solution

Date of Analysis: July 30, 2020

Radiochemical Purity by HPLC: 99%



HPLC ANALYSIS LOT 730-008-058-A-20070525-TN
File Name: int27158 Date and Time: 7/30/2020 11:19:26 A
Unit 2 Radio

Peak #	Area %	Time	Area
1	0.45	4.16930	126.73973
2	98.97	5.57470	27652.82564
3	0.10	6.57330	27.74739
4	0.20	6.81870	54.80009
5	0.06	7.19330	17.25570
6	0.09	7.39470	24.09029
7	0.06	7.57730	17.03008
8	0.08	8.89330	21.16642
Totals	100.00		27941.65534

Storage Recommendation: Store at -20°C.

Quality Level Disclaimer: Results were obtained utilizing non-qualified instrumentation, methods that have not been validated or transferred, and analyses not performed according to a formal, documented, analytical protocol.

When handling this radiochemical, please refer to the safe handling of isotopes document provided with your shipment. If the document is misplaced, a link to a copy is available at www.moravek.com/customer-service.

In addition to the hazard connected with radiation, this compound also has chemical safety characteristics that need to be taken into account before it can be safely worked with. For assistance with designing a safe working environment and procedures for this and all chemicals at your workplace, please contact OSHA at 800-321-6742(OSHA) or https://www.osha.gov/html/Feed_Back.html.

Caution: This material was manufactured under research grade conditions and is intended for investigational or manufacturing use only. It is pharmaceutically unrefined and is not suitable for use in humans or clinical diagnosis. Responsibility for its use and compliance with federal law rests solely with the purchaser. If the compound and/or any associated information/documentation derived from its use could be used for any potential future filings, research grade material is not recommended.