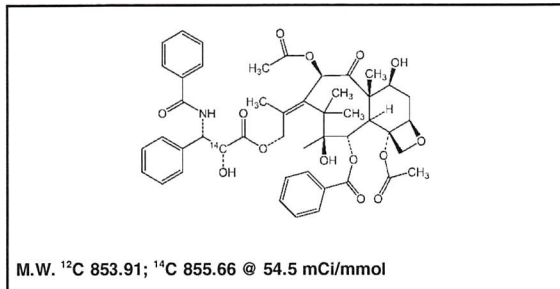


## Certificate of Analysis

**MC-2627**

**Paclitaxel, [2'-<sup>14</sup>C]-**



**Lot #:** 945-066-0545-A-20170703-DLE

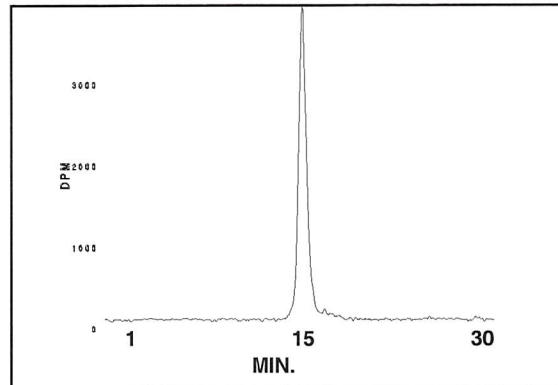
**\*Molar Activity:** 54.5 mCi/mmol

**Concentration:** 0.1 mCi/ml; 1.57 mg/ml

**Packaged in:** Ethyl acetate in a sealed ampoule

**Date of Analysis:** November 18, 2020

**\*Radiochemical Purity by HPLC:** 99%



Peak #	Area %	Time	Area
1	98.78	15.29070	17072.05688
2	0.18	16.03470	31.41317
3	0.48	17.04130	83.13330
4	0.32	17.46400	54.78846
5	0.24	18.14130	42.08568
Totals	100.00		17283.47749

**Storage Recommendation:** Store at -80°C.

**\*Quality Level Disclaimer:** Results were obtained utilizing non-qualified instrumentation, methods that have not been validated or transferred, and analyses not performed according to a formal, documented, analytical protocol.

When handling this radiochemical, please refer to the safe handling of isotopes document provided with your shipment. If the document is misplaced, a link to a copy is available at [www.moravek.com/customer-service](http://www.moravek.com/customer-service).

In addition to the hazard connected with radiation, this compound also has chemical safety characteristics that need to be taken into account before it can be safely worked with. For assistance with designing a safe working environment and procedures for this and all chemicals at your workplace, please contact OSHA at 800-321-6742(OSHA) or [https://www.osha.gov/html/Feed\\_Back.html](https://www.osha.gov/html/Feed_Back.html).

**Caution:** This material was manufactured under research grade conditions and is intended for investigational or manufacturing use only. It is pharmaceutically unrefined and is not suitable for use in humans or clinical diagnosis. Responsibility for its use and compliance with federal law rests solely with the purchaser. If the compound and/or any associated information/documentation derived from its use could be used for any potential future filings, research grade material is not recommended.