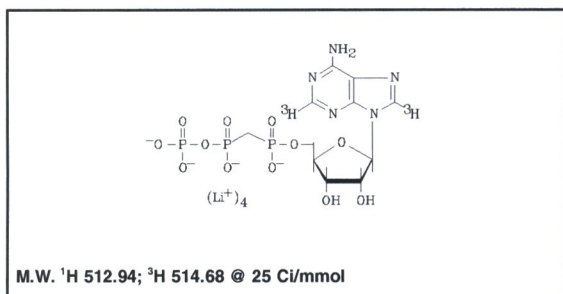


Certificate of Analysis

MT-1789

α,β -Methylene adenosine-5'-triphosphate, tetralithium salt, [adenine-2,8- ^3H]-



Lot #: 394-073-025-A-20220119-JPL

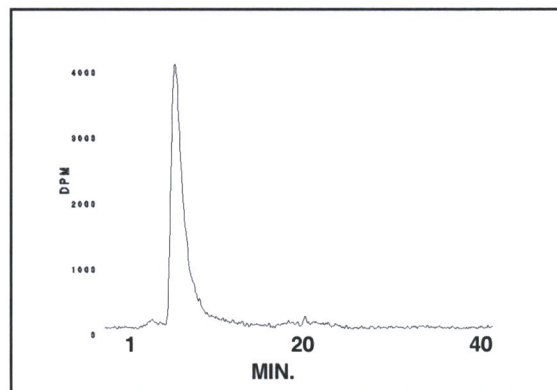
***Molar Activity by UV:** 25 Ci/mmol

Concentration: 1.0 mCi/ml; 20.59 $\mu\text{g/ml}$

Packaged in: Ethanol : water (1 : 1) solution

Date of Analysis: February 4, 2022

***Radiochemical Purity by HPLC:** 97%



HPLC ANALYSIS LOT 394-073-025-A-20220119-JPL

File Name: intj1241 Date and Time: 2/4/2022 12:44:31 PM

Unit 19 - Radio

Peak #	Area %	Time	Area
1	0.59	4.98670	217.47345
2	97.42	7.31330	35778.13987
3	0.47	8.36830	170.83208
4	0.17	9.11330	63.03832
5	0.25	9.83830	93.27435
6	0.58	11.06500	212.19862
7	0.52	20.71830	190.52315
Totals	100.00		36725.47984

Storage Recommendation: Store at -20°C .

***Quality Level Disclaimer:** Results were obtained utilizing non-qualified instrumentation, methods that have not been validated or transferred, and analyses not performed according to a formal, documented, analytical protocol.

When handling this radiochemical, please refer to the safe handling of isotopes document provided with your shipment. If the document is misplaced, a link to a copy is available at www.moravek.com/customer-service.

In addition to the hazard connected with radiation, this compound also has chemical safety characteristics that need to be taken into account before it can be safely worked with. For assistance with designing a safe working environment and procedures for this and all chemicals at your workplace, please contact OSHA at 800-321-6742(OSHA) or https://www.osha.gov/html/Feed_Back.html.

Caution: This material was manufactured under non-GLP conditions and is intended for investigational or manufacturing use only. Formulations using this material are not suitable for use in humans or clinical diagnosis. Responsibility for use of this material and compliance with federal law rests solely with the purchaser. An expiry date has not been determined. In the absence of stability data, a purity check is recommended before use.