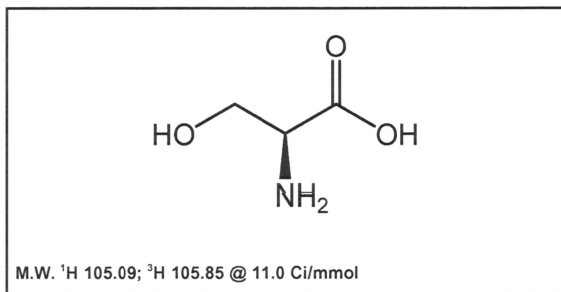


## Certificate of Analysis

**MT-910**

**L-Serine, [2,3-<sup>3</sup>H]-**



**Lot #:** 945-090-011-A-20140527-TNG

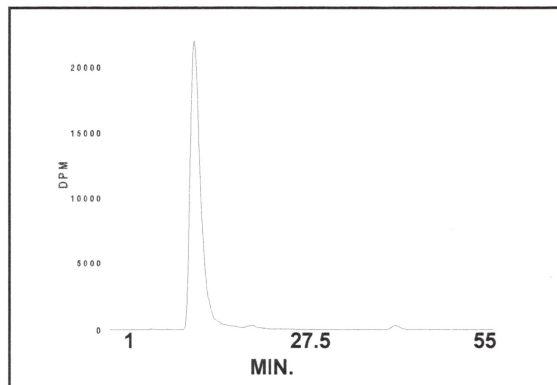
**Specific Activity:** 11.0 Ci/mmol

**Concentration:** 1.0 mCi/ml; 9.62 µg/ml

**Packaged in:** Ethanol : water (2 : 98) solution

**Date of Analysis:** November 20, 2018

**Radiochemical Purity:** 97.6%



Peak #	Area %	Time	Area
1	0.13	6.43000	316.56694
2	0.10	8.78000	250.14627
3	97.60	12.18000	237605.11502
4	0.07	14.17330	162.78454
5	0.02	15.14670	49.67277
6	0.06	17.88330	137.26841
7	0.81	20.63330	1973.74763
8	0.14	24.08330	337.51118
9	1.07	40.87330	2603.68121
Totals	100.00		243436.49397

**Stability and Storage Recommendation:** The rate of decomposition is approximately 1%/month for the first six months after purification when stored at 0-5°C.

**Caution:** Not For Use In Humans Or Clinical Diagnosis. This product is intended for investigational or manufacturing use only. It is pharmaceutically unrefined and is not intended for use in humans. Responsibility for its use in humans, as a diagnostic reagent, and compliance with federal laws rests solely with the purchaser.